

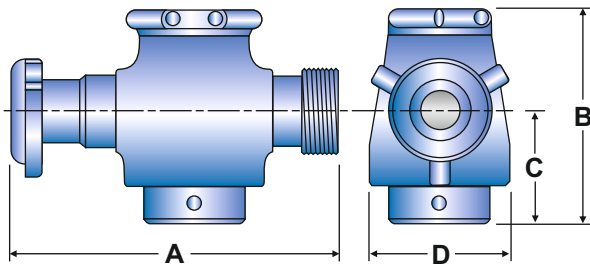
PLUG VALVES

A. Special Design Features

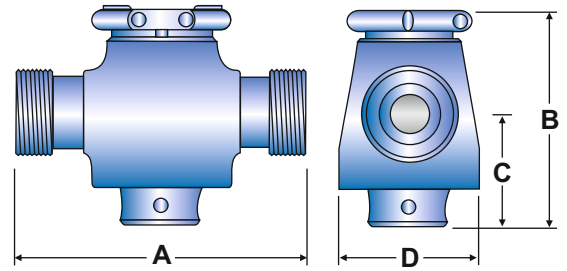
1. PARVEEN valve bodies are made from alloy steel forgings which are designed to variety of end connections to be integrally machined.
2. PARVEEN plug and inserts are designed to resist abrasion and corrosion.
3. PARVEEN valves can be easily adopted for hydraulic or pneumatic actuation. These configurations are designed for integration with complete manifold systems.
4. We manufacture in compliance with API-6A & API-Q1.
5. Our range is up to 15000 PSI WP.

B. Operating Principle

1. The plug rotates 90° (1/4 turn) for rapid full open or close operation. This reduces erosion due to throttling action.
2. To ensure a uniform clamping action for the initial pressure seal, the valve body is tapered.
3. To ensure a continuous seal becoming more effective as differential pressure increases, the plug and inserts "float" downstream with pressure differential caused by the initial seal.
4. Relationship between the seal and the bearing areas is such that the torque required to operate the valve is minimized.
5. To eliminate the need for thrust bearing to reduce friction, the plug is balanced by identical stem seals.

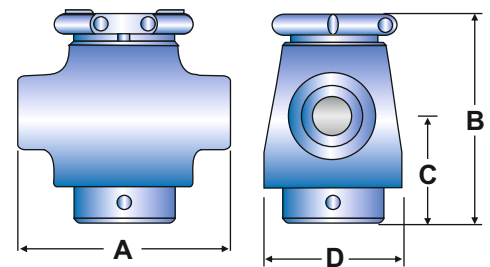


M X F Union End Type

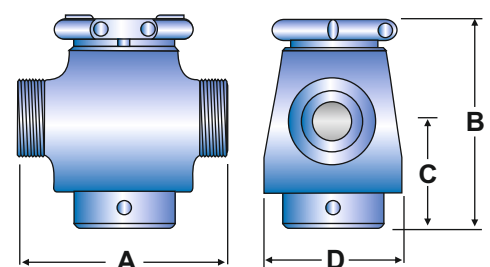


F X F Union End Type

VALVE DESCRIPTION	PART NOS	DIMENSION				W.P. PSIG	APPROXIMATE WEIGHT (lbs)
		A±1	B±1	C±1	D±1		
1" x 2" LP FEMALE	40000500	8.1/2	9.1/4	4.9/16	5.3/8	6000 10000	39
1" x 2" LP MALE	40000400	9.0	9.1/4	4.9/16	5.3/8	6000 10000	40
1" x 2" 1502 UNION	40000300	10.9/16	9.1/4	4.9/16	5.3/8	6000 10000 15000	60
2" x 2" LP FEMALE	40000200	8.1/2	10.5/8	5.1/2	5.3/8	6000 10000	61
2" x 2" 1502 UNION	40000100	13.7/8	10.5/8	5.1/2	7.1/8	6000 10000 15000	90
3" x 3" LP FEMALE	40000600	11.1/8	13.0	7.1/8	9.3/8	6000 10000	148
3" x 3" 1502 UNION	40000700	17.0	13.0	7.1/8	9.3/8	6000 10000	188



L.P. Female Type (threaded)



L.P. Male Type (threaded)

- All dimensions are in inches.
- Special plug valve can be provided to suit customer requirements.

PLUG VALVES

