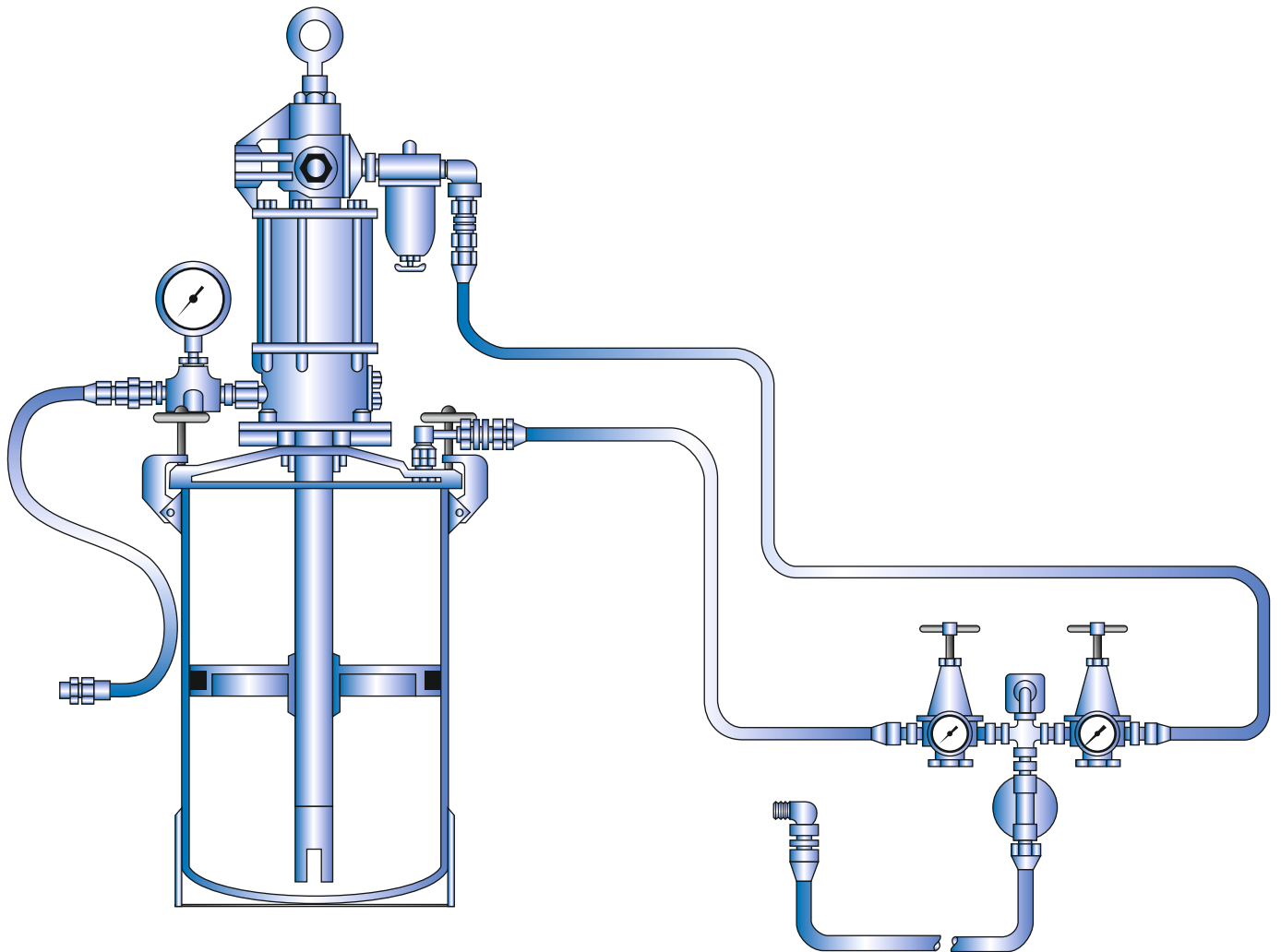




GREASE INJECTION SUPPLY SYSTEM

PARVEEN Grease Injection Supply Systems are used to deliver grease to grease injection control head assemblies, under operating pressures from 2,000 PSI to 15,000 PSI with grease injection and grease return hoses.

The basic design consists of a grease reservoir, grease pump, pressure and volume controls, pressure gauges and necessary piping, valves, fittings and other components to power and control the unit.



GREASE INJECTION SUPPLY SYSTEM	
W.P. (PSI)	Part No.
2,000	105412
5,000	108909
5,000	109100
10,000	107005
15,000	103442